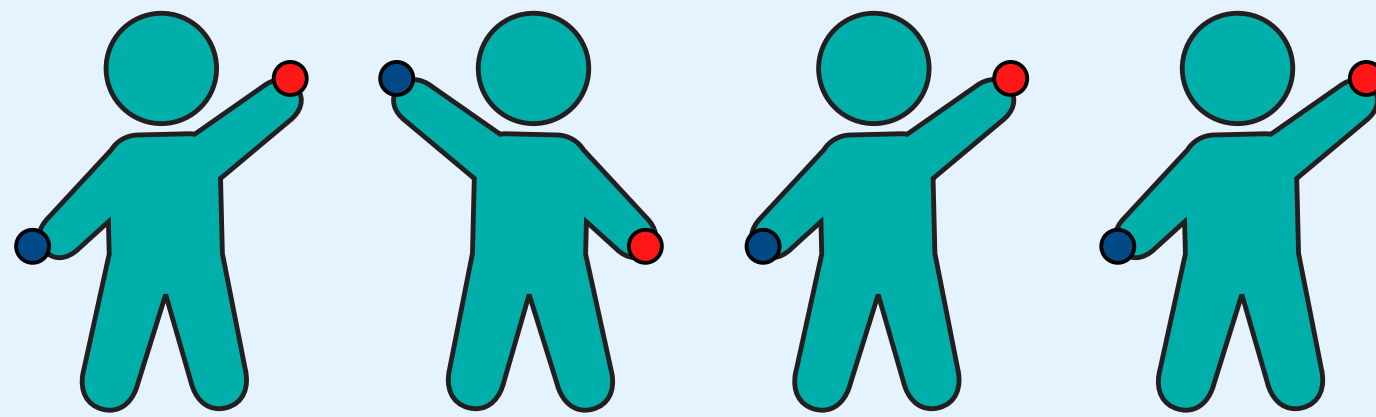


Red or Blue

Get to know each other.

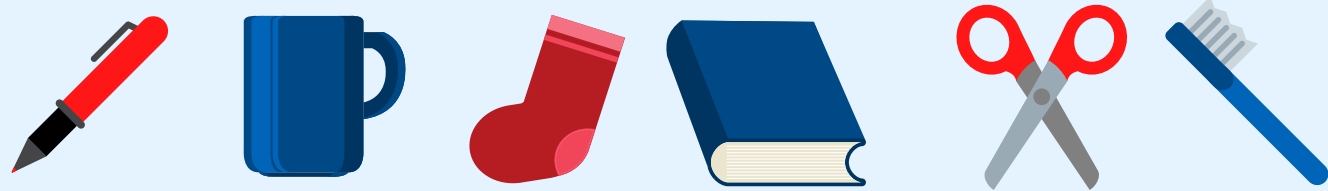
Have fun!

Notice similarities & differences.



Step 1:

Ask participants to grab a red item and a blue item.



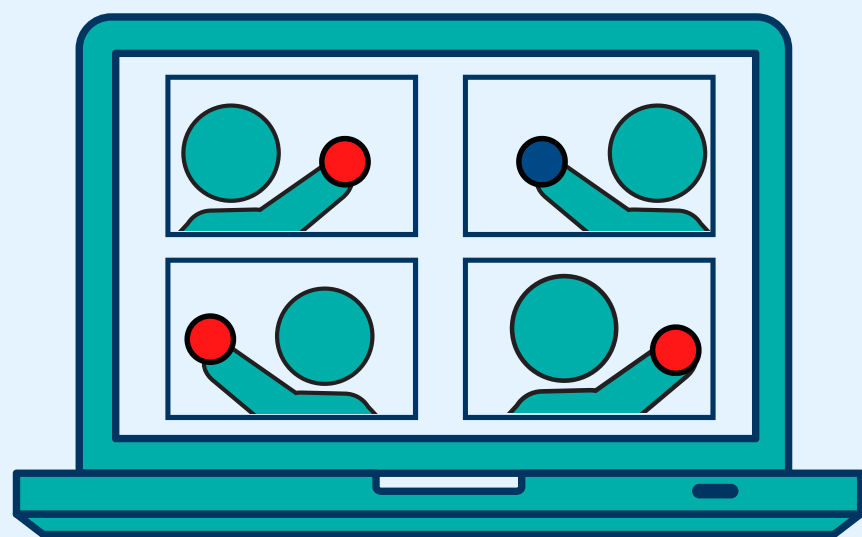
Step 2:

Read a statement.

If you prefer chocolate, hold up your red item. If you prefer candy, hold up your blue item.

Step 3:

Participants hold up the item that corresponds to their answer!



Step 4:

Repeat with another statement and/or ask participants to expand on their answer.

Pro-tips:

- 📺 Invite participants to turn on their camera. This game is a great way to encourage video participation!
- ⌨️ If cameras are off or unavailable, participants can type their answer in the chat.
- 💬 Ask follow-up questions to prompt deeper discussion.
- 😊 Invite participants to suggest statements.

For more resources & support:

Visit www.tinyurl.com/alternativesRP20-21